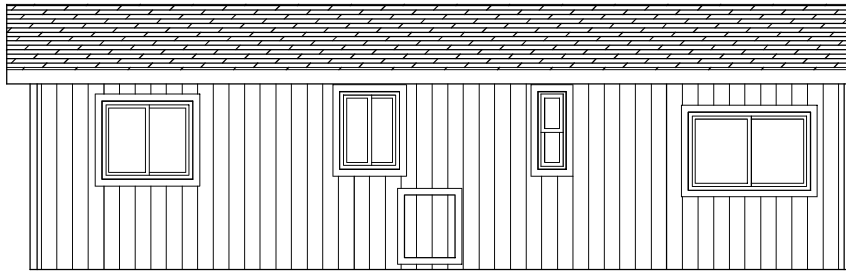
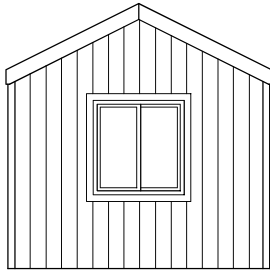


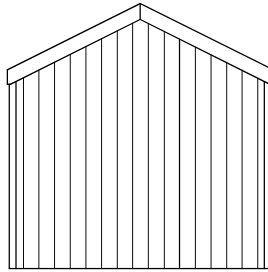
<p>299 N. Smith Ave., Corona CA 92880</p>	<p>APPROVER'S SEAL</p>	<p>MODIFICATIONS</p> <p>3-SEE REV LOG SR 1-4-16</p>	<p>MODEL: SL-02 35/11-2-1BR</p>	<p>SHEET NO.: LT-101</p>
<p>PROPRIETARY AND CONFIDENTIAL THESE DRAWINGS AND SPECIFICATIONS ARE ORIGINAL PROPRIETARY AND CONFIDENTIAL MATERIALS OF CHAMPION HOME BUILDERS INC. COPYRIGHT © 1976-2016 BY CHAMPION</p>			<p>TITLE: LITERATURE PLAN U-KITCHEN</p>	<p>PAGE: 1 OF 1</p>
			<p>DATE: 11-14-11</p>	<p>SCALE: 1/8" = 1'-0"</p>
			<p>DRAWN BY: BMS</p>	<p>CHECKED BY:</p>
				<p>FILENAME: SL-02-LT101</p>



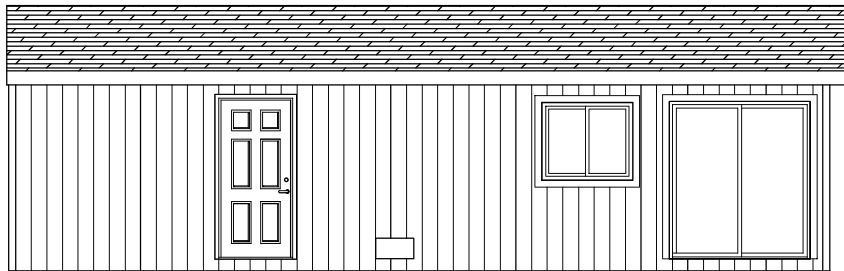
LEFT




FRONT

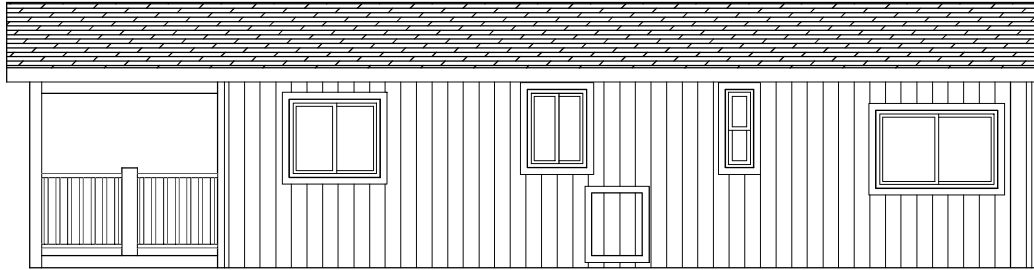


REAR

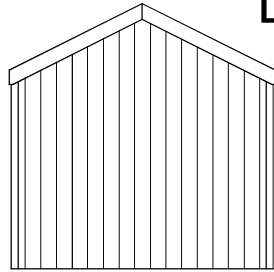


RIGHT

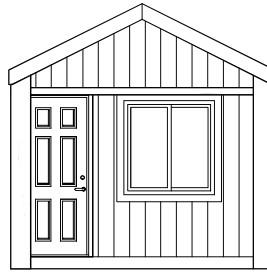
 <b>CHAMPION</b> <small>MANUFACTURED BEAUTIFULLY</small> 299 N. Smith Ave., Corona CA 92880	APPROVER'S SEAL	MODIFICATIONS 3-SEE REV LOG      SR    1-4-16	MODEL: <b>SL-02</b> 35/11-2-1BR	SHEET NO.: <b>AE-102</b>
PROPRIETARY AND CONFIDENTIAL THESE DRAWINGS AND SPECIFICATIONS ARE ORIGINAL PROPRIETARY AND CONFIDENTIAL MATERIALS OF CHAMPION HOME BUILDERS INC. COPYRIGHT © 1976-2016 BY CHAMPION			TITLE: <b>ELEVATION- STD</b> U-KITCHEN (NO PORCH)	PAGE: 1 OF 1
			DATE: 11-02-11      SCALE: 1/8" = 1'-0"	FILENAME: SL-02-LT101
			DRAWN BY: BMS      CHECKED BY:	



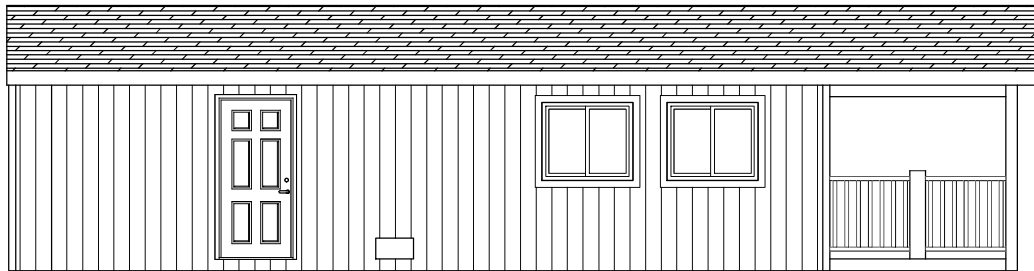
LEFT




REAR



FRONT

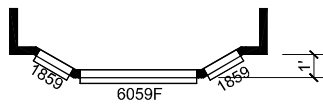


RIGHT

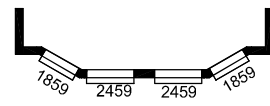
 <b>CHAMPION</b> <small>MANUFACTURED BEAUTIFULLY</small> 299 N. Smith Ave., Corona CA 92880	APPROVER'S SEAL	MODIFICATIONS 3-SEE REV LOG      SR    1-4-16	MODEL: <b>SL-02</b> 35/11-2-1BR TITLE: <b>ELEVATION - OPT PORCH</b> U-KITCHEN DATE: 11-14-11      SCALE: 1/8" = 1'-0" DRAWN BY: BMS      CHECKED BY:	SHEET NO.: <b>AE-102</b> PAGE: 1 OF 1
PROPRIETARY AND CONFIDENTIAL THESE DRAWINGS AND SPECIFICATIONS ARE ORIGINAL PROPRIETARY AND CONFIDENTIAL MATERIALS OF CHAMPION HOME BUILDERS INC. COPYRIGHT © 1976-2016 BY CHAMPION				



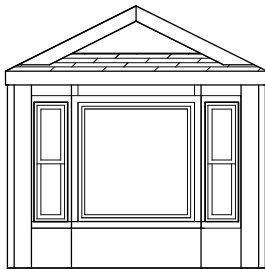
6059F



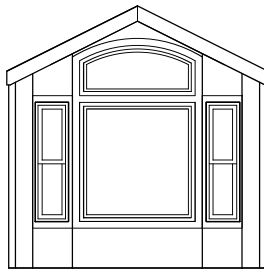
6059F



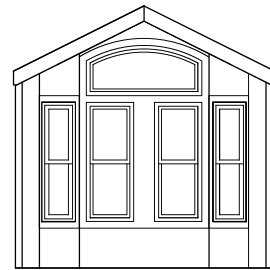
T6026F



OPTIONAL  
FRONT BAY-1



OPTIONAL  
FRONT BAY-2



OPTIONAL  
FRONT BAY-3

**Silvercrest** CHAMPION  
MANUFACTURED BEAUTIFULLY  
299 N. Smith Ave., Corona CA 92880

APPROVER'S SEAL

MODIFICATIONS

MODEL:

**SL-02**  
35/11-2-1BR

SHEET NO.:

**AE-101**

TITLE: **ELEVATIONS - OPT FRONT**

DATE: 10-31-12

SCALE: 1/8" = 1'-0"

FILENAME:

PAGE:

DRAWN BY: BMS

CHECKED BY:

SL-02-LT101

1 OF 1

PROPRIETARY AND CONFIDENTIAL  
THESE DRAWINGS AND SPECIFICATIONS ARE ORIGINAL  
PROPRIETARY AND CONFIDENTIAL MATERIALS OF  
CHAMPION HOME BUILDERS INC.  
COPYRIGHT © 1976-2016 BY CHAMPION